

# BTEC Travel and Tourism Tech Award

## Revision Booklet

### Component 2- External Exam

- Factors that influence global travel and tourism
- Impact of travel and tourism and sustainability
- Destination management

### Key words:

**Identify**= Name or characterise a feature

**Describe**= Outline Characteristics

**Explain**= Set out purposes or reasons for, say why

**Compare**= Identify similarities and differences

**Assess**= Make an informed judgement

**Evaluate**= Judge from available evidence



# Key words

## Package Holidays

where the price of a holiday includes transport (air, rail or coach) to get you to your chosen destination and accommodation (hotel).



## Self-catering

Where kitchen and cooking facilities are provided for customers to buy and prepare their own meals.

## DMO

Destination Management Organisation

## Ground Transport

Moves visitors and travellers when they are not flying between destinations e.g. a transfer from the airport to a hotel.



## Disposable Income

The money a person has left over to use as they wish, from their wages, after they have paid all of their bills etc.



## Concierge

A member of staff, usually in a hotel who helps guests.

## Terminal

A location where transport journeys start or end e.g. Liverpool Lime Street Station.



## TALC

Tourism Area Life Cycle Model

## Gateway

Where visitors enter or exit the UK and continue their journey e.g. London Heathrow Travellers often change from one mode of transport to another at a gateway.



## PPP

Public-Private Partnership

# Learning Aim A

**Factors that influence global travel and tourism**



# Travel and Tourism Organisations

**Tour Operators** work with different organisations such as hotels and ground transport. They contract large numbers of hotel rooms and flights at discount prices and sell them to customers through travel agents.

E.g. TUI, Jet2holidays, Virgin Holidays.

**Travel Agents** have specific roles including:

- Booking flights
- Booking package holidays
- Arranging trips and excursions
- Booking car hire and travel insurance
- Providing foreign exchange

## **Business Travel Agents**

Provide the same service as Retail Travel Agents but for the business market. This might involve booking for employees to attend meetings, conferences and events. They manage all of the travel booking services for a large business, including flights, rail bookings. Hotels, transfers, meeting venues and spaces. They may also arrange chauffeur driven cars and airport parking.

## **Retail Travel Agents**

Offer products and services to customers looking for holidays. They are found on the main high street in a town or city or in supermarkets. They can be accessed via telephone through call centres or as web based agents online.

## **Accommodation**

Tourists need somewhere to stay, whether taking a trip for leisure or business, to visit a conference or event. Each accommodation type offers different options, services and facilities.

- Hotels
- Hostels
- B&B's
- Self-catering apartment
- Caravan/campsite



**Jet2.com**  
*Friendly low fares*

## **Hotel Facilities and services**

- Restaurants and bars
- Conference and meeting rooms
- Concierge service
- Business centre
- 24-hour reception
- Fitness and leisure facilities
- Parking
- Entertainment



## **Conference and Events Management Companies**

These organisations book, or provide venues and locations for conferences and different types of events. They can also arrange equipment hire, audio-visual facilities and catering options.

# Tourist Attractions

## Built Attractions

Not natural, built by man.

Most tourists visit these to have fun and be entertained.

Most have been purpose built e.g. theme park

Others built for different reasons but now attract visitors such as stately homes and castles.

- Art galleries
- Museums
- Zoo's



- Fun
- Entertainment
- Spend time with family and friends
- Educational facilities
- Wheelchair hire
- Cafes and shops



- Much busier during school holidays and summer months
- Provides seasonal work for local people

## Natural Attractions

These are natural features of the landscape and environment.

Not been built by man.

Many tourists visit these to relax, get exercise, escape from the city and to connect with nature.

- Beaches
- Caves
- Forests
- Lakes
- Mountains



Free to visit

May need to pay for car parking

# Tourism Promotion

Different organisations promote tourism to raise awareness and to encourage people to travel and visit different destinations. They can also support visitors, providing guidance and advice.

- Provide information and advice to visitors
- Encourage people to stay and spend money in local attractions, accommodation providers, cafes, bars and restaurants.

Tourist or Visitor Information Centres	Regional Tourism Agencies	National Tourism Agencies
Located in many towns and cities They provide support and advice to visitors. They provide services such as directions, hotel bookings, tickets for shows, tours and events. Sell products and merchandise such as gifts, maps and guides.	Located in certain areas. Their aim is to attract more visitors to a specific region, county or area. Manage websites and online promotional campaigns to attract tourists to their area.  e.g. Cumbria Tourism	Have a key role in promoting tourism for the whole country. Manage different campaigns and promotions to attract more inbound visitors. Help to raise awareness and the profile of a country and to increase the money earned from tourism.  e.g. VisitBritain

Staff are well trained and give advice on...

- Where to stay, visit and eat
- Opening times of attractions
- Driving routes, directions and parking information
- Weather advice
- Location of key facilities e.g. toilets, cash machines and transport hubs



# Transport

Air Travel	Rail Travel	Sea Travel	Road Travel
<p>Good for travelling longer distances</p> <p>Full-service airlines such as Emirates or Virgin Atlantic offer a range of services included in the ticket price</p> <ul style="list-style-type: none"><li>• A choice of food and drink options</li><li>• Entertainment such as movies and music</li><li>• Duty-free shopping, eye-masks, travel socks and ear plugs.</li><li>• Different classes of travel-economy, premium, business and first.</li><li>• Low-cost airlines (Ryanair and EasyJet) offer low priced flights with less services and products included.</li><li>• Check-in luggage, seat choice and food and drink available but at an extra cost.</li></ul>	<p>33 train operating companies in Britain</p> <p>Offer customers a choice of first or standard class travel and the opportunity to buy discount tickets if booked in advance.</p> <p>Examples of large rail terminals</p> <ul style="list-style-type: none"><li>• Manchester Piccadilly</li><li>• Liverpool Lime Street</li><li>• London Euston</li></ul>	<p>Ferry terminals and ports offer sea travel options for customers. Some ferry services only carry people but others transport vehicles as well as passengers.</p> <p>e.g. Stena Line, Irish Ferries.</p> <p>Range of facilities on board such as bars, restaurants, cabins for longer journeys.</p> <p>Seaport Gateway = Port of Dover, where many visitors from Europe enter the UK.</p>	<ul style="list-style-type: none"><li>• Own car</li><li>• Hire car</li><li>• Taxi</li><li>• Coach</li></ul> <p>Most convenient and flexible way to travel</p> <p>Network of motorway service stations provides road travellers with facilities such as toilets, fuel, shops and restaurants.</p>

## Transport Providers

- Airlines
- Car hire
- Train operators
- Ferry companies
- Coach and bus operators
- Taxi companies

Tourists need safe transport from one destination to another as well as access to a range of facilities and services to make their journeys more comfortable

# Regulators

## Roles and Responsibilities

- Ensure that organisations meet standards
- Give customers help and support
- Represent members
- Help with repatriation (bringing people home if something goes wrong abroad)
- Licensing
- Dealing with customer complaints



Help to protect customers and ensure that organisations meet industry standards.

### **Civil Aviation Authority (CAA)**

Helps to ensure that the aviation (airline) industry meets strict and safety standards and ensure that customers are protected.

Runs and manages the Air Travel Organiser's Licence (ATOL) holiday protection scheme which gives customers a full refund if the company they book their holiday with closes down.



### **Office of Rail and Road (ORR)**

- Regulates railways and roads
- Provides advice and guidance to passengers on station and platform safety
- Monitors serious railway incidents
- Monitor Highways England who operate, maintain and improve England's motorways.

### **Maritime and Coastguard Agency (MCA)**

Provides legislation and guidance on maritime (sea) matters.

Responsible for inspections including;

- Safety of passengers and crew on boats
- Making sure all equipment is fit for purpose on boats



### **ABTA**

Represent travel agents and tour operators  
Customers who book with ABTA registered travel agents are protected under its financial protection scheme which would give them a full refund if the travel agency closed.

# Ownership of travel and tourism organisations

## Private Sector

Organisations in this sector are owned or controlled by private individuals, shareholders or companies.

e.g.

- Blackpool Pleasure Beach
- FlyBe
- Alpha Holidays Limited

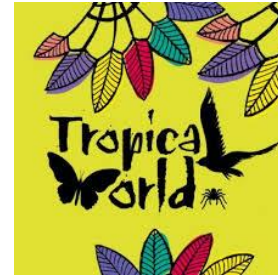


## Public Sector

Organisations in this sector are funded and sometimes owned by central and local governments

e.g.

- Tropical World Leeds is owned and managed by Leeds City Council



## Voluntary sector

These are independent organisations usually funded by membership donations, grants and the sale of products and services such as tickets, food, drink and merchandise.

e.g.

- The National Trust who own and conserve historic houses, monuments, castles, coastlines, forests, gardens, parks and nature reserves.
- Over 5 million people are members.



# Aims of travel and tourism organisations

## Financial Aims

1. Sell goods and services to make a profit
2. Increase sales by attracting new customers
3. Control costs



## Strategic Aims

1. Expanding- grow and develop by offering more products and services to more customers.
2. Competing with other businesses so need to provide consistent excellent customer service, gain good quality customer reviews, have a unique product to sell.
3. Value for money- offer discounted rates on tickets



# How travel and tourism organisations work together

## Vertical Integration

Where an organisation owns different companies at different levels of the supply chain

e.g. a tour operator might own its own travel agency, airline or hotel

## Horizontal Integration

Where a business takes control of another business at the same level

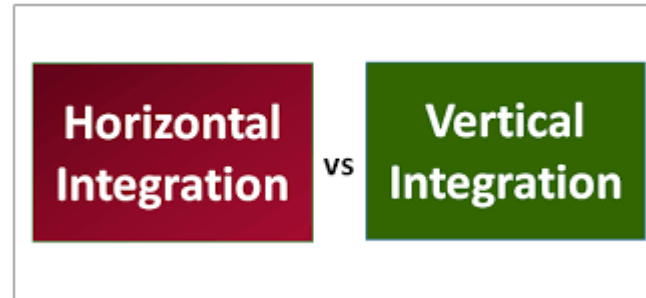
e.g. a travel agent taking over another travel agent-  
TUI took over Thomson Travel

## Partnerships

Instead of taking over another business, organisations might choose to work together in partnership.

Partnerships can exist between public, private and voluntary organisations

e.g. Virgin Trains work in partnership with Uber the online taxi booking service to provide customers with a smooth journey from door to door.



## Why work together?

Increase sales and income

Carry out joint marketing and promotion

Cut costs

Provide good customer care

# Types of Tourism

## **Domestic Tourism**

When visitors and tourists take holidays within their own country.

## **Outbound Tourism**

When visitors and tourists travel to a different country from their own country for a holiday.

## **Inbound Tourism**

When visitors and tourists from overseas travel into a different country

# Types of Visitor

- Individuals
- Couples
- Families
- Groups
- Domestic visitors
- Inbound visitors
- Customers with specific needs

# Types of destination

## ***Coastal areas***

Seaside resorts  
Sandy beaches  
Steep cliffs  
Very attractive destinations for many visitors who want to relax, walk, surf, fresh air and fun.

## ***Towns and Cities***

Capital cities  
Historically and culturally rich  
Shopping  
Eating out  
Entertainment- theatres, shows, concerts  
Sightseeing opportunities

## ***Countryside areas***

National parks  
Lakes  
Forests  
Mountains

# Reasons for Travel

- Day trips
- Holidays
- Visiting friends and relatives
- Meetings
- Conferences
- Events
- Short breaks

## ***Leisure Travel***

When travelling for leisure people are often taking a holiday, or day trip, or travelling to visit a friend or relative.

## ***Business Travel***

Travelling to a location or venue for work purposes, for example a meeting, conference or training event.

# Types of Holiday

- Package
- All-inclusive
- Independent tailor-made
- Multicentre
- Fly or self-drive
- Short breaks
- Touring holidays
- Specialist/niche
- Voluntary work
- Holiday parks

## ***Fly-drive***

Involves air travel to a new destination, followed by car hire to allow visitors to explore further afield for themselves.

## ***Self-drive***

Include car or motorhome hire and pre-booked accommodation for visitors following a specific route or tour.

## ***short breaks***

A trip between one and three nights. City breaks, spa breaks and activity breaks.

## ***Independent and tailor-made holidays***

A selection of different travel services chosen and booked independently, often using the internet and online booking sites so customers can build the holiday experience that they want.

## ***Touring holidays***

Offer travellers the chance to see different places in one trip, fully organised by a travel company. Such as ocean or river cruises and rail or coach tours.

## ***Package holiday***

Where different services are put together by the travel company and offered to customers at a single price.

## ***Multicentre***

Where travellers visit two or more destinations or resorts as part of one trip.

## ***Holiday parks***

Holidays that provide families with a range of indoor and outdoor entertainment and accommodation, including live shows, swimming pools, rides and competitions. e.g. Butlins, Haven etc.

## ***All-inclusive holidays***

These are package holidays but also include all food, selected drinks and activities for one set price.

## ***Voluntary work***

Often popular with young travellers who want to gain experience or those with more time to spare to improve the lives of others. E.g. construction projects, teaching English, animal care, sports coaching.

## ***Specialist and niche holidays***

For travellers looking for something a bit different such as attending a major sporting event, experiencing different cultures or taking time out to focus on health and wellbeing.

# Types of Accommodation

- Hotels
- Motels
- Guest houses
- Bed and breakfasts
- Bunk barns
- Holiday cottages
- Chalets and eco-lodges
- Villas and apartments
- Caravans
- Youth hostels

## ***Serviced accommodation***

Usually provided in hotels, guest houses and bed and breakfasts. This includes a number of guest services in the price such as cleaning the room daily, providing towels and clean bed linen and mini-bars.

## ***Non-serviced accommodation***

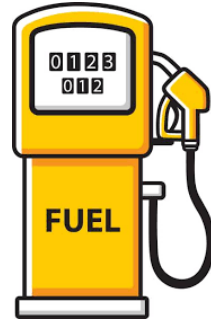
Provides less services to visitors and is often cheaper but visitors need to cook and clean for themselves for the duration of their stay. Often includes apartments, villas, camping and caravan sites.



# Factors influencing global travel and tourism

## ***Recession***

A slowdown in economic activity.  
Can have a negative effect on the travel and tourism industry because people have less disposable income.



## ***Boom***

This is when a country experiences a period of growth. People have more disposable income and are more likely to spend their money on luxury products such as holidays. This is a positive for the travel and tourism industry.

## Economic Factors

## ***Levels of employment***

If people lose their jobs or become unemployed then they have less money to spend on holidays and are less likely to take a holiday.

## ***Fuel costs***

The cost of fuel changes all the time, depending on the price of oil. Rising oil prices can affect the price of fuel and so travel and tourism organisations have to pass on this cost to their customers. Airlines may also reduce the amount of flights that they offer.

## ***Currency exchange***

This is the value of the currency of one country against another. Rates of currency exchange are constantly changing. This will affect how much a tourist's money is worth when they change it to another currency. Rates can affect how much a tourist will have to spend on holiday for services such as accommodation, meals out, entertainment and gift shopping.

# Factors influencing global travel and tourism

## ***Legislation and Regulations***

This can affect visitors in number of ways. Certain laws are put in place to try to ensure visitor safety and security or to protect the destination.



## ***Trade and taxes***

Some countries have a departure tax for when people leave the country. E.g. the UK has a charge known as Air Passenger Duty (APD) which is added to the cost of flights for those with more than 20 seats.

# Political Factors

## ***Political instability***

The threat or outbreak of war can have a huge impact on tourism. Holidays may be cancelled and tourists will be advised not to travel.

## ***Passport and visa entry requirements***

To travel from the UK a tourist needs a valid passport in order to leave and gain entry to outbound destinations. Some countries also require a valid visa.



## ***Funding and tax incentives***

Tourism can benefit a country in many ways, so governments are keen to develop tourism in any way that they can e.g. in Kenya, the government has introduced tax incentives such as removing VAT from air tickets and park entrance fees to encourage more people to visit.

# Factors influencing global travel and tourism

## ***Geological hazards e.g. Earthquake, Volcano***

Can cause damage to infrastructure that is important to the travel and tourism industry- hotels, airport, roads etc.



## Natural Disasters



## ***Severe weather events- weather hazards***

Can affect certain parts of the world on a regular basis.

- Flooding
- Drought
- Fires
- Landslides
- Tornadoes
- Avalanches
- snowstorms



# Factors influencing global travel and tourism

## ***Types of media***

- Social media
- Newspaper
- Adverts
- TV/News reports
- Radio
- TV Programmes



## ***Visitor numbers***

Locations used in TV shows and films become popular with tourists.



# Media, publicity and image

## ***Negative effects***

Some destinations have been given bad reputations due to media coverage, which can affect the amount of people visiting that destination.

e.g. Magaluf is known as a 'wild party' resort.



## ***Positive effects***

Coverage of special events can show the good things about a resort and can generate a lot of positive publicity.

e.g. The World Cup in 2018 and the 2012 Summer Olympics in London



# Factors influencing global travel and tourism

## ***Safety measures***

In order to keep tourists safe on holiday, authorities and travel providers will use a range of safety measures. Designed to stop problems arising and to provide visual reassurance that they take security seriously.



## ***Airport safety***

Airports have the most stringent safety measures of any organisation in the travel and tourism sector.

- Luggage being screened
- Individuals being screened
- Passport checks

Can be time consuming and cause delays.

# Safety and security concerns

## ***Personal Safety***

Staying safe makes the difference between a dream holiday and a nightmare experience.

Being in an unfamiliar place and sometimes with a language barrier can put people at risk.

- Theft of personal belongings
- Getting lost
- Accidents

## ***Safety guidance***

Foreign and Commonwealth Office (FCO) will issue advice on safety and security to tourists. They will advise which countries are not safe to travel to and how to stay safe in certain destinations.



Foreign &  
Commonwealth  
Office

## ***Effects on tourism***

If a destination is no longer considered as 'safe' then this can have a devastating impact on their tourism industry.

# Factors influencing global travel and tourism

## ***Infectious diseases and illnesses***

These can affect tourists and the symptoms can be extremely unpleasant, sometimes resulting in death if not treated properly.

- Malaria
- Cholera
- Tetanus
- Norovirus
- Yellow Fever



## ***Effects on the destination***

People may be reluctant to take the necessary precautions before they travel, this could be due to cost of vaccines or the time required. Therefore they may opt to travel to destinations that don't require these things.

# Health risks and precautions

## ***Precautions and preventative measures***

There are many common sense approaches that tourists can take to limit the possible risks.

- Wearing insect repellent
- Keeping exposed parts of the body covered
- Using special bed netting
- Having a required vaccine
- Washing hands before eating
- Drinking bottled water not tap water



## ***Travel insurance***

It is important for tourists to have insurance cover so...

- Medical bills can be paid
- If they get ill then they can claim money back against the cost of their holiday.
- Insurance can help get them home if they are very ill or in the case of death.

### ***Reviewing destinations offered***

Organisations will constantly review destinations that they offer and add new destinations when needed, especially when they destinations have received positive media coverage and have become popular.



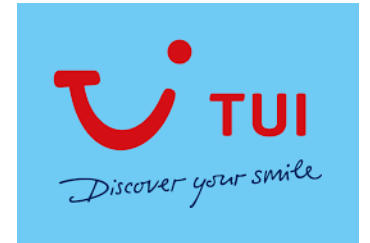
### ***Adapting and developing new products and services***

The success of products and services depends on there being a demand from customers. This is in response to real-world situations.

e.g. 2015 terrorist attacks in Tunisia

TUI offered cut-price deals to encourage the recovery of Tunisian tourism.

# Travel and tourism organisations' responses to factors



### ***Adapting operational procedures***

Organisations must review their procedures due to multiple global threats to security. This allows them to identify where they could improve their current practice, ensuring the safety and security of their customers.

- Positive media coverage can lead to increased visitor numbers in destinations. Organisations may have to adapt by offering more flights to a destination e.g. in 2018, 70 new flights were being offered to Croatia.
- When there is a natural disaster, travel organisations will adapt by cancelling flights.



### ***Reviewing pricing structures***

Many organisations perform a cost risk analysis and adjust prices in order to maintain visitor numbers. People are willing to travel to places that may considered 'risky' if they feel that the holiday price is excellent value for money.

### ***Providing the public with up to date information***

Travel advice is provided by local, regional and national government agencies.

- Traffic reports and delays
- Weather warnings affecting travel



### ***Encouraging employment***

Governments will provide funding to invest in tourism within their country. This helps to create jobs.

e.g. in 2015 the UK government pledged £1.7million of funding to provide 500 new apprenticeships and 1500 jobs.

# Government responses to factors

### ***Travel restrictions***

Governments have the power to impose travel restrictions. They can also limit the ability of members of their own population to travel freely. They can also restrict inbound tourist access to their country or part of it, along with visa restrictions.

### ***Promoting a positive image***

It is important to promote a positive image that encourages tourism. Governments have organisations that are responsible for tourism promotion. E.g. in the UK we have VisitBritain.

### ***Introducing security measures***

Governments constantly review their security measures due to the ongoing threat of terrorism. e.g. venues now have to check all bags before members of the public are allowed to enter.



Voluntary organisations play an important role in global travel and tourism...

- Preserve historic buildings
- Promote sustainable tourism
- Provide emergency support to destinations affected by major events.



# Voluntary organisations' responses to factors

## ***Raising awareness of issues***

Work with governments to raise the negative issues associated with global tourism. Voluntary organisations (charities) believe that if tourism isn't managed then this will have a negative impact on local communities and environments and can cause long-term problems for residents, including the overall decline of tourism.



## ***Raising funds***

Securing funding is an important issue for tourism charities that want to promote sustainable tourism.

# Learning Aim B

**Impact of travel and tourism and sustainability**



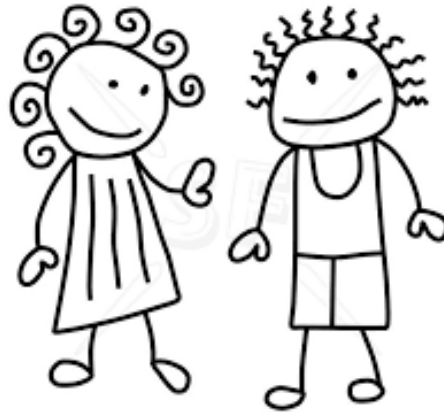
# Impacts of tourism

People living in destinations that are more reliant on income from tourism for their livelihood are more at risk from exploitation. Social impacts affect people and their lives.

## ***Negative impacts***

- Disruption to everyday life
- Loss of culture
- Resentment towards visitors
- Increased crime
- Exploitation of locals

## Social impacts



## ***Positive impacts***

- Improved quality of life
- Access to facilities
- Improved transport and infrastructure
- Improved cultural awareness

# Impacts of tourism

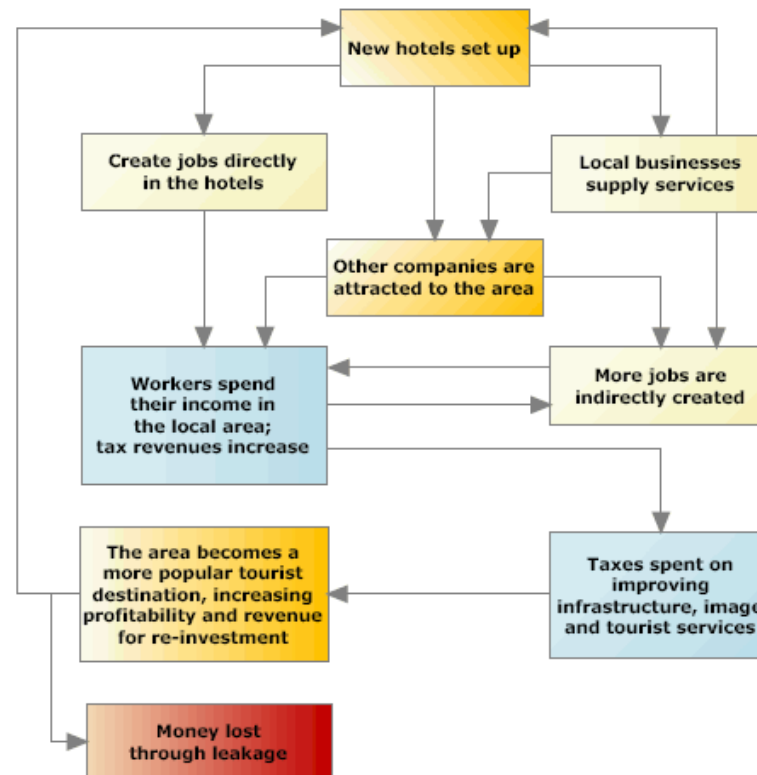
Tourism can bring economic benefits to an area. However, often local communities do not receive a fair share of the overall income generated by tourism. Too much money can go to the big organisations and not to the people or local organisations who are in direct contact with tourists.



## Economic impacts

### *Negative impacts*

- Low-paid jobs
- Seasonal unemployment
- Increased cost of living



### *Positive impacts*

- Economic multiplier effect
- Employment opportunities
- Training and education
- Foreign currency earnings

# Impacts of tourism



One of the biggest global issues is how we care for the environment. People are worried that tourism currently places too much pressure on the environment and irreversible harm is being done, such as affects on wildlife.



## ***Negative impacts***

- Increased pollution
- Overcrowding
- Traffic congestion
- Reduced biodiversity
- Erosion



## Environmental impacts

## ***Positive impacts***

- Conservation
- Education
- Open spaces and improved street furniture
- Regeneration

# Managing social impacts



NO ALCOHOL

## ***How to show respect for traditions and religions***

Tourists are welcomed to get involved in local traditions and religions, it is often seen as great respect.

It can also enhance the experience of the holiday for tourists and educate them about different cultures.

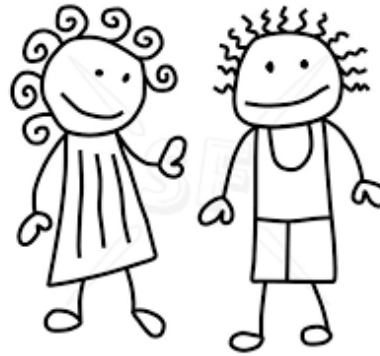


## ***Reducing negative impacts of behaviour***

When on holiday people like to 'let their hair down', this sometimes involves 'excessive' behaviour such as drinking too much alcohol. In some places, British tourists, especially young adults have a poor reputation and can have a negative impact on a destination.

- Rowdy behaviour and noise pollution
- Not respecting local dress codes
- Local services like ambulances having to spend time dealing with drunk tourists.

One solution has been to have British police walking the streets of Magaluf and Ibiza to act as a deterrent to those who want to break the law.



## ***How to behave and dress appropriately***

Many destinations have different cultural practices to our own and have rules about...

- How to behave in public
- Not openly kissing in public
- Dressing modestly

## ***How to avoid conflict***

- Follow rules for photography
- Learn basic cultural mannerisms e.g. tipping etiquette
- Respect local culture and religion
- Make an effort to fit in

# How infrastructure development can benefit local people

## ***Transport***

Improving roads, trams, airports and railways benefits locals and tourists.

Local people can get to work more quickly and easily.

Good transport will attract more visitors.

## ***Telecommunications networks***

When people go on holiday they like to share pictures of their experiences. Having a good Wi-Fi connection can help local people to access products, jobs, trade etc.

## ***Water and sewerage systems***

## ***Power supply***

## ***Buildings***

# Benefits of Partnership projects

Having the support of the local community is essential for any business to succeed. Without the support of locals, conflict could quickly arise.

- Increase in profits and money earned from tourism
- Jobs created
- Improved visitor experience
- Alternative source of income for local people
- Less risk to the environment- conservation



# Learning Aim C

## Destination Management



# Tourism Development

## Butler's Tourism Area Life Cycle (TALC) Model

### **Exploration**

Tourism is very small scale and low key.

When small numbers of people visit an area because of something unique like an amazing feature such as a beach.

### **Involvement**

When the local population begins to respond to the needs of visitors by introducing local amenities such as hotels and restaurants etc.

### **Development**

When tour operators notice the potential of an area for tourism. The number of visitors begins to rise. Locations are promoted as a tourist destination.

### **Consolidation**

When tourism becomes part of the area. Local people are employed in the industry, visitor numbers grow steadily. Older amenities may become dated and untidy. Some destinations risk becoming unattractive to visitors and unpopular.

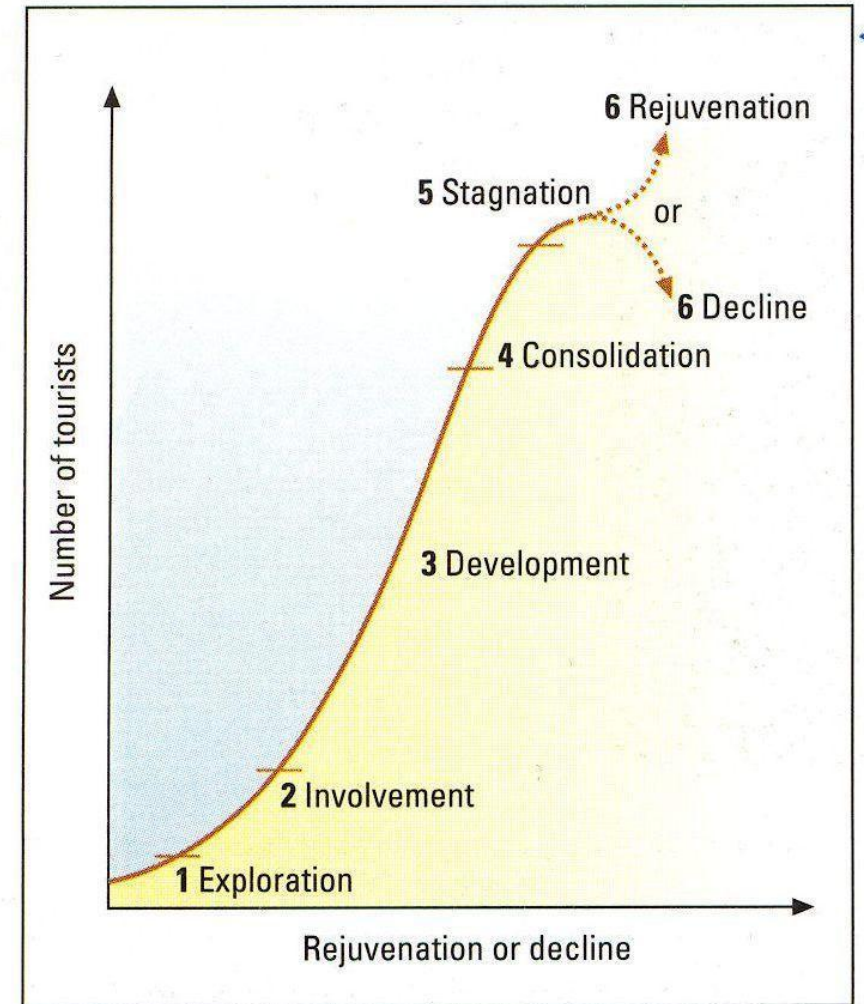
### **Stagnation**

The number of visitors starts to drop, often due to a negative image of the destination. Leads to a loss of business for local people, some may have to close.

### **Decline or Rejuvenation**

Decline is caused by visitor numbers dropping dramatically. Those who do visit only do so because it is cheap. Smaller hotels close. Area becomes run down.

Rejuvenation is an investment to 'smarten' up local features and re-invent the destination to try to attract visitors again.



# Emerging Destinations

These are locations that have grown in popularity over the last ten years and have seen a growth rate of visitor arrivals of over 4% year on year. Offer a different kind of holiday experience.

## **Characteristics**

- Visitors that seek adventure
- Difficult to access from overseas
- Underdeveloped transport links
- Basic infrastructure
- Access to basic healthcare and education
- Unspoilt natural and cultural features
- Traditional lifestyles
- Low volumes of visitors

E.g. Baku, Azerbaijan

# Mature Destinations

These destinations have been popular for well over 20 years and have seen tourism develop and grow over this time.

## **Characteristics**

- Mass tourism
- Good transport links
- Developed infrastructure
- Established tourist season
- Reliance on tourism as a main source of income
- Well advertised and marketed
- Conflict between the local community and tourists

E.g. Marbella, Costa del Sol, Spain



# Partnerships

Partnerships are essential for travel and tourism organisations.

Effective partnerships can help an organisation gain an advantage over others through sharing costs and working together on projects and ideas.

Public-Private sector partnerships- PPP's



## ***Advantages***

- Shared resources, skills and expertise
- New ideas
- Shared costs
- Increased publicity



## ***Disadvantages***

- Conflicting aims and priorities
- Less flexibility
- Slows down decision making
- Difficulty in responding to change



# Destination Management Organisations- DMO's

These are organisations that promote, manage and help to develop tourism in their area.

This can include working with a range of partners to promote different tourism activities, facilities and events within a local area.

UK National DMO – VisitBritain

UK Regional DMO – Visit Cheshire

UK Local DMO – Visit Liverpool

## ***Benefits of DMO's***

- Raising the profile of a destination
- Launching new products
- Marketing
- Funding and sponsorship

