

22 May 2020

Dear Parent/Carer

Due to the current COVID-19 lockdown restrictions and to safeguard all parents/students the school has taken the decision to move to an online ordering service for the purchase of school uniform for our new Year 7 students.

Please find attached the comprehensive uniform booklet which will enable you to choose and order your child's uniform. Total Clothing are offering 'free' postage for any orders over £50 received before 30 June.

There is a link to the sizing video in the introduction page of the booklet, however you may wish to click below to access it:

Link to sizing video landing page

<https://totalclothing.co.uk/goldington-academy-school-uniform/>

Link to youtube video

[https://youtu.be/Dxff3q\\_GtFA](https://youtu.be/Dxff3q_GtFA)

We are in unprecedented times, but please rest assured we are looking forward to welcoming your child to Goldington Academy to continue their educational journey when it is safe to do so.

If your child is entitled to Free School Meals (FSM), or you are in the process of applying for FSM please complete the attached form and return to [bella@goldington.beds.sch.uk](mailto:bella@goldington.beds.sch.uk) so that your order can be processed via the school.

Kind regards



**Mrs M Lavelle**  
**Director of Finance and Operations**

# Uniform Order Form for FSM children only

**only to be completed for  
children eligible for FSM (to the value of £50.00)**

If your total is more than £50.00 you will need to pay the difference. Please email Mr Mike Birchall, Finance Manager [birchallm@goldington.beds.sch.uk](mailto:birchallm@goldington.beds.sch.uk) to arrange this.

Pupil Name: \_\_\_\_\_

|  | Price: | Size: | Quantity: | Cost: |
|--|--------|-------|-----------|-------|
| Navy Blazer (with logo)  |        |       |           |       |
| White Collared Shirt (Boys)                                    |        |       |           |       |
| White Collared Shirt (Girls)                                   |        |       |           |       |
| School Tie   |        |       |           |       |
| Dark Grey Trousers (Boys)                                      |        |       |           |       |
| Dark Grey Trousers (Girls) <span style="color: red;">or</span> |        |       |           |       |
| School Approved Grey Tartan Skirt                              |        |       |           |       |
| Black Shoes  |        |       |           |       |
| PE KIT   |        |       |           |       |
| Navy PE Top (with logo) (Girls)                                |        |       |           |       |
| Navy Skort (Girls)   |        |       |           |       |
| Navy Sweatshirt (Girls)  |        |       |           |       |
| Navy PE Top (with logo) (Boys)                                 |        |       |           |       |
| Navy Shorts (Boys)   |        |       |           |       |
| Navy & White Rugby Top (with logo) (Boys)                      |        |       |           |       |
| Navy PE Socks  |        |       |           |       |
| Short White PE Socks   |        |       |           |       |
| Gum Shield   |        |       |           |       |
| Trainers   |        |       |           |       |
| Football Boots (Boys)  |        |       |           |       |
| Grey V-Neck Pullover or slipover (Optional)                    |        |       |           |       |
| Sports Leggings (Black) (Girls) (Optional)                     |        |       |           |       |

**Total**

£ \_\_\_\_\_

Return this order request to: [bella@goldington.beds.sch.uk](mailto:bella@goldington.beds.sch.uk) by 30 June at the latest

# TOTAL CLOTHING

YOUR SCHOOL UNIFORM SUPPLIER



SCHOOLS

## EARLY BIRD OFFER

FREE POSTAGE  
& PACKING

When you spend  
over £50.00

(From 1st until  
30th June 2020).



## UNIFORM GUIDE AND PRICE LIST

[www.totalclothingshop.co.uk/goldingtonacademy](http://www.totalclothingshop.co.uk/goldingtonacademy)

Like us on  
**facebook** 

To stay up to date  
with our latest offers.

At the time of producing this leaflet we are still operating under government guidelines during the Covid 19 pandemic. Please check our website:

[www.totalclothing.co.uk](http://www.totalclothing.co.uk) for the latest information updates.

PLEASE ORDER BY  
**THURSDAY 13TH AUGUST**  
To guarantee delivery  
before Back to School.

## INTRODUCTION

### Dear Parents & Carers

Watch this [video](#) for all of the Goldington Academy uniform requirements and helpful sizing hints.

We have designed this booklet to help you to order your school uniform with ease, whilst understanding the requirements from the school. Given the current Covid-19 situation, we have added some additional information to try and make it as easy as possible.

We understand how difficult it can be when you are buying secondary school uniform for the first time (or even second or third time) as children's sizes can be so different. With this in mind, we have designed this booklet to help you every step of the way.

We start with a [Uniform Measuring Guide](#) to ensure that you measure correctly for each garment. On this page you will see how to measure for each part of the school uniform you will need.

We have also included a [Hints & Tips](#) section on buying your school uniform.

You will also see a [Uniform Policy](#) which tells you how the uniform should be worn and what is not acceptable.

On the pages that follow there is a comprehensive [Uniform Size Guide](#) detailing the garments required for your school uniform. Garments will be marked compulsory and optional so you can see what you need to buy now and what you can maybe purchase later.

We always encourage parents to order as soon as possible to ensure you will have the correct uniform for back to school.

Lastly you will see the link to order your school uniform on-line. This can be done via your school website.

We have a returns policy of 28 days from your purchase to return or exchange of your garments. It would be great if you could send returns as soon as possible to help our stock levels.

We are here to help you get the best fit for school uniform for your child. If you have any questions please call our friendly customer care team on **01733 394758** or via email at [customerservices@totalclothing.co.uk](mailto:customerservices@totalclothing.co.uk) who will be happy to advise you.

Kind regards

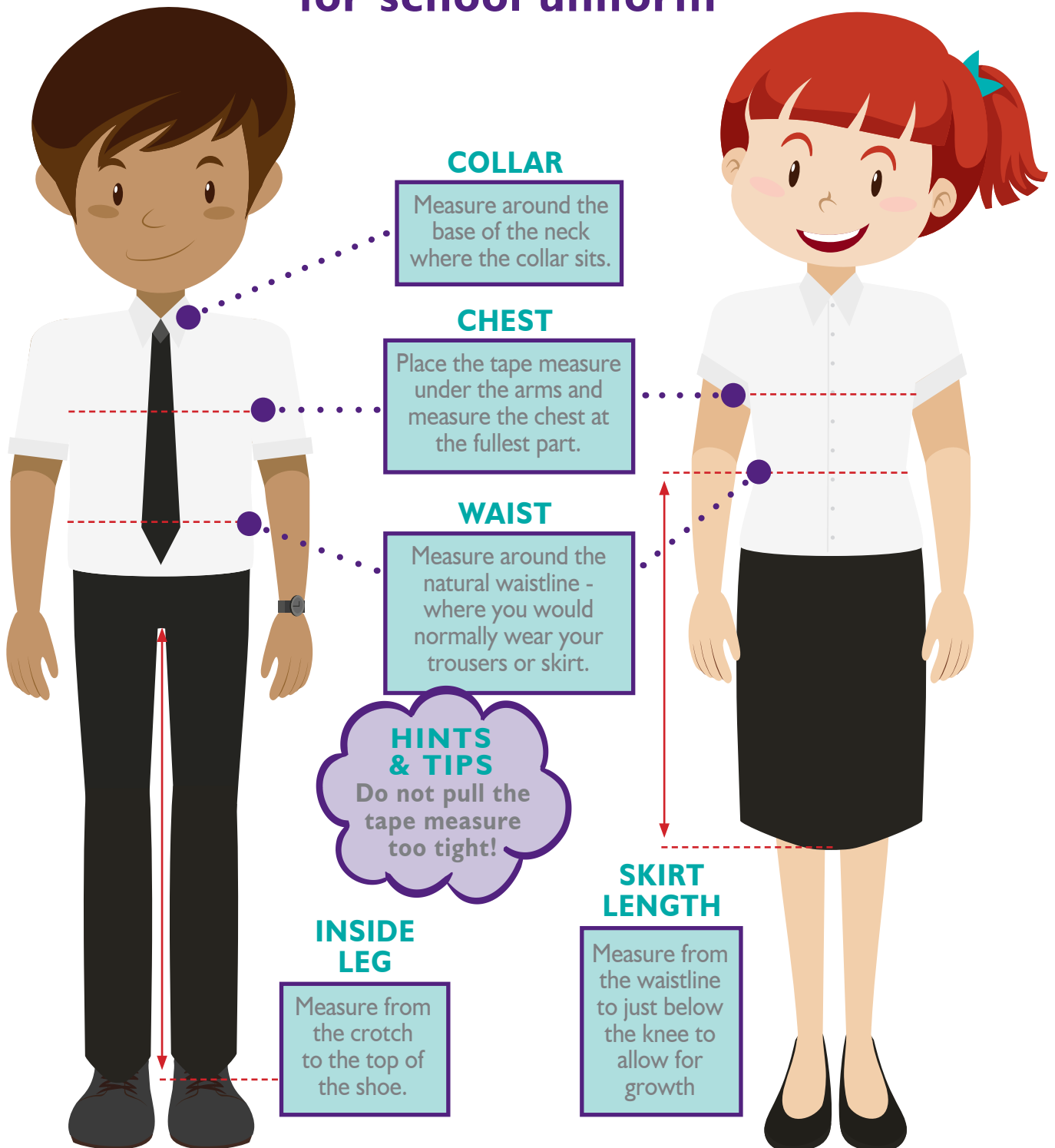
**Christine, Laura, James and Ben**  
**The Schools Team, Total Clothing Ltd**



SCHOOLS

## UNIFORM MEASURING GUIDE

### How to measure your child for school uniform





# **GOLDINGTON ACADEMY | UNIFORM STANDARDS**

## **INTRODUCTION**

At Goldington Academy, we believe that our uniform plays a key part in promoting and maintaining a sense of pride and identity in our school community. By adhering to the policy, our students demonstrate that they wish to be a part of the school community and that they uphold the ethos and values of the school. Our uniform also acts as a social leveller and is designed to remove the influence of peer pressure in our students' day to day dress, therefore preventing any potential for bullying or discrimination. We also believe that wearing uniform is hugely important in preparing our students for employment in their adult lives, in which they may be required to dress appropriately for their role or to adhere to a specific dress code. It is expected that students adhere rigorously to the uniform policy at all times, unless otherwise agreed with the Academy Principal.

## **STANDARDS**

### **TROUSERS**

Trousers with decorative items, such as buttons or embroidery are NOT permitted. Trousers should be tailored and NOT be made of stretch, lycra, skinny or highly fashionable in style, nor should they have cargo or jeans style pockets.

### **JEWELLERY**

Jewellery is NOT allowed, for example rings, bracelets and necklaces. A small pair of plain stud earrings may be worn. No other visible body piercing is acceptable. A watch may be worn provided it is marked with the owner's name. The wearing of wrist bands and bracelets is not permitted, unless for religious purposes.

### **HAIR STYLES**

Hair styles should NOT include unnatural colours, additional hair braids, patterns or designs. Any student wearing unnatural colour in their hair will be asked to remove it immediately (please see non-compliance section below). No tramlines or patterns should be shaved into hair or the eyebrows. Hair bands should be discreet and plain in colour e.g. black or blue. Fashion type hair bands should not be worn in school.

### **TRAINERS**

Trainers should not be worn during classroom based lessons, unless otherwise agreed by the Academy Principal. If trainers are to be worn for an agreed reason, they should be black and discreet.

### **MAKE-UP AND NAIL VARNISH**

Light make-up may be worn e.g. concealer, mascara. However, students may be asked to remove make-up if it is deemed to be inappropriate or too heavy e.g. foundation.

Nail varnish should NOT be worn. Any students who are found to be wearing nail varnish will be asked to remove it. Continued wearing of jewellery or nail varnish, or make-up that is deemed to be inappropriate, will result in a referral to the Head of Year and may result in a consequence such as loss of break/lunch time as outlined in the procedures below.

### **COATS**

Coats appropriate for the season are an important part of school kit for your child. All children go outside at break and lunch time and, as you know, the British weather can change during the school day!

### **SCHOOL BAGS**

School Bags are necessary for keeping books and letters clean and safe on the journey to and from school. As lockers are provided for children to secure their belongings, only a small bag is required.

**Please ensure all clothing and belongings are clearly marked with your child's full name, using name tapes or indelible pen.**



SCHOOLS

## GOLDINGTON ACADEMY | UNIFORM

### BOYS UNIFORM

#### COMPULSORY UNIFORM:

**White Collared Shirt**  
(Short or long sleeved)

**School Tie\***

**Navy Blazer\***  
With school logo

**Dark Grey Trousers**

**Black Shoes**

#### COMPULSORY PE KIT:

**Navy PE Top\***  
With school logo

**Navy Shorts\***

**Navy and White Rugby Top\***  
With school logo

**Navy PE Socks\***  
Long navy school approved games socks

**Short White PE Socks**

**Gum Shield**

**Trainers**

**Football Boots**

#### OPTIONAL ITEMS:

**Grey V-Neck Pullover or Slipover\***  
With school logo (Not Compulsory)

### GIRLS UNIFORM

#### COMPULSORY UNIFORM:

**White Collared Shirt**  
(Short or long sleeved)

**School Tie\***

**Navy Blazer\***  
With school logo

**Dark Grey Trousers or School Approved  
Grey Tartan Skirt\***

**Black shoes**

#### COMPULSORY PE KIT:

**Navy PE Top\***  
With school logo

**Navy Skort\***

**Navy Sweatshirt\***  
Quarter zip, with school logo

**Navy PE Socks\***  
Long navy school approved games socks

**Short White PE Socks**

**Gum Shield**

**Trainers**

#### OPTIONAL ITEMS:

**Grey V-Neck Pullover or Slipover\***  
With school logo (Not Compulsory)

**Sports Leggings**

Items above marked with \* are available directly from Totalclothingshop only.

[www.totalclothingshop.co.uk/goldingtonacademy](http://www.totalclothingshop.co.uk/goldingtonacademy)



SCHOOLS



SCHOOLS

## HINTS & TIPS | SPECIFIC TO YOUR SCHOOL

### HINTS & TIPS

#### PE SKORTS & LEGGINGS

These come in waist sizes, use your skirt waist size as a guide.

### HINTS & TIPS

#### BLAZERS

You may want to go for a slightly bigger blazer size if your child will be wearing a jumper during the winter months. Make sure when you try on your blazer the sleeves come down to the knuckles to allow for growth and across the shoulders there is also room for growth.

### HINTS & TIPS

#### JUMPERS

The v-neck knitted jumpers can come up fairly small in size. It would be advisable to order a size larger.

### HINTS & TIPS

#### PE TOPS

PE Tops should always be bought slightly bigger to allow for growth and ease of taking on and off in a hurry when changing.

### HINTS & TIPS

#### SKIRTS

Skirts have an adjustable waist. Fit to the knee or below to allow room for growth.

### SIZING

Choose the sizes closest to your measurements.

### HINTS & TIPS

#### PE SHORTS

The PE Shorts have a draw string to pull the waist in tighter.

### HINTS & TIPS

#### DON'T FORGET

Don't forget name labels, water bottles and mouth guards!



## GOLDINGTON ACADEMY | UNIFORM



### GOLDINGTON ACADEMY BOYS BLAZER

CHEST 28 CHEST 30 CHEST 32 CHEST 34 CHEST 36 CHEST 38 CHEST 40 CHEST 42

Made from 100% woven Polyester twill.  
With internal zip pockets, Maxtech Plus stain resistant finish and concealed zip.  
COMPULSORY FOR YEARS 7, 8, 9 & 10

From £25.10

QUANTITY/SIZE REQUIRED



### GOLDINGTON ACADEMY GIRLS BLAZER

CHEST 28 CHEST 30 CHEST 32 CHEST 34 CHEST 36 CHEST 38 CHEST 40 CHEST 42

Made from 100% woven Polyester twill.  
With internal zip pockets, Maxtech Plus stain resistant finish and concealed zip.  
COMPULSORY FOR YEARS 7, 8, 9 & 10

From £25.10

QUANTITY/SIZE REQUIRED



### GOLDINGTON ACADEMY NAVY TIE

16 Inch clip on tie.

£5.40

QUANTITY/SIZE REQUIRED



### GOLDINGTON ACADEMY V NECK JUMPER *(Not Compulsory)*

CHEST 26 CHEST 28 CHEST 30 CHEST 32 CHEST 34 CHEST 36 CHEST 38 CHEST 40 CHEST 42

Soft handle but hard wearing.  
Ribbed cuffs and welt.  
COMPULSORY FOR YEAR 6 and OPTIONAL FOR YEARS 7, 8, 9 & 10

SALE £14.00

QUANTITY/SIZE REQUIRED



### GOLDINGTON ACADEMY SLIPOVER *(Not Compulsory)*

CHEST 26 CHEST 28 CHEST 30 CHEST 32 CHEST 34 CHEST 36 CHEST 38 CHEST 40 CHEST 42

Premier LC Slipover is soft but hard wearing.  
With a ribbed welt.

SALE £10.00

QUANTITY/SIZE REQUIRED



### GOLDINGTON ACADEMY PLEAT TARTAN SCHOOL SKIRT

W/L 20/16 W/L 20/18 W/L 20/20 W/L 22/16 W/L 22/18 W/L 22/20 W/L 22/22 W/L 24/18 W/L 24/20 W/L 24/22  
W/L 26/18 W/L 26/20 W/L 26/22 W/L 28/20 W/L 28/22 W/L 30/20 W/L 30/22 W/L 32/20 W/L 32/22 W/L 34/20 W/L 36/20

All round stitch down pleat, Internal back waist adjuster.

From £21.50

QUANTITY/SIZE REQUIRED



### GOLDINGTON ACADEMY GREY BOYS SLIMBRIDGE TROUSERS

W/L 26/28 W/L 28/30 W/L 30/30 W/L 30/32 W/L 30/34 W/L 32/30 W/L 32/32 W/L 32/34 W/L 34/32 W/L 34/34 W/L 36/32  
REGULAR REGULAR SHORT REGULAR LONG SHORT REGULAR LONG REGULAR LONG REGULAR

Fashionable slim fit. Flat front. Internal waist adjuster.  
Two side pockets plus back pocket with button. Belt loops.

From £16.99

QUANTITY/SIZE REQUIRED

## GOLDINGTON ACADEMY | UNIFORM



### GOLDINGTON ACADEMY GREY GIRLS TWIN POCKET TROUSER

|              |              |              |              |   |              |              |              |              |              |              |
|--------------|--------------|--------------|--------------|---|--------------|--------------|--------------|--------------|--------------|--------------|
| AGE<br>9     | AGE<br>10    | W/L<br>22/28 | W/L<br>22/30 | W/L<br>24/28  | W/L<br>24/30 | W/L<br>26/28 | W/L<br>26/30 | W/L<br>28/28 | W/L<br>28/30 | W/L<br>30/30 |
| W/L<br>32/30 | W/L<br>32/32 | W/L<br>34/30 | W/L<br>36/30 | Senior trouser with slim leg shape and two front welt pockets.<br>Back waist button tab detail. |              |              |              |              |              |              |

From £16.50

QUANTITY/SIZE REQUIRED



### GOLDINGTON ACADEMY BOYS LONG SLEEVE SHIRTS

|            |              |            |              |            |              |            |              |            |
|------------|--------------|------------|--------------|------------|--------------|------------|--------------|------------|
| NECK<br>12 | NECK<br>12.5 | NECK<br>13 | NECK<br>13.5 | NECK<br>14 | NECK<br>14.5 | NECK<br>15 | NECK<br>15.5 | NECK<br>16 |
|------------|--------------|------------|--------------|------------|--------------|------------|--------------|------------|

Two piece collar, chest pocket, rounded cuff with two button fastening and gauntlet opening.  
Twin pack. Easy care and machine washable.

From £12.50

QUANTITY/SIZE REQUIRED



### GOLDINGTON ACADEMY BOYS SHORT SLEEVE SHIRTS

|            |              |            |              |            |              |            |              |            |
|------------|--------------|------------|--------------|------------|--------------|------------|--------------|------------|
| NECK<br>12 | NECK<br>12.5 | NECK<br>13 | NECK<br>13.5 | NECK<br>14 | NECK<br>14.5 | NECK<br>15 | NECK<br>15.5 | NECK<br>16 |
|------------|--------------|------------|--------------|------------|--------------|------------|--------------|------------|

Two piece collar, chest pocket and short sleeves.  
Easy care and machine washable.  
Twin pack.

From £12.50

QUANTITY/SIZE REQUIRED



### GOLDINGTON ACADEMY GIRLS LONG SLEEVE BLOUSES

|             |             |             |             |             |             |             |             |
|-------------|-------------|-------------|-------------|-------------|-------------|-------------|-------------|
| CHEST<br>28 | CHEST<br>30 | CHEST<br>32 | CHEST<br>34 | CHEST<br>36 | CHEST<br>38 | CHEST<br>40 | CHEST<br>42 |
|-------------|-------------|-------------|-------------|-------------|-------------|-------------|-------------|

Long sleeve blouses in easycare fabric, with a two piece collar.  
Twin pack and machine washable.  
Wash temperature 40 Degree.  
Features Easy Iron. Tumble Dry.

From £12.50

QUANTITY/SIZE REQUIRED



### GOLDINGTON ACADEMY GIRLS SHORT SLEEVE BLOUSES

|             |             |             |             |             |             |             |             |
|-------------|-------------|-------------|-------------|-------------|-------------|-------------|-------------|
| CHEST<br>28 | CHEST<br>30 | CHEST<br>32 | CHEST<br>34 | CHEST<br>36 | CHEST<br>38 | CHEST<br>40 | CHEST<br>42 |
|-------------|-------------|-------------|-------------|-------------|-------------|-------------|-------------|

Easycare fabric with a two piece collar.  
Twin pack and machine washable.

From £12.50

QUANTITY/SIZE REQUIRED

## GOLDINGTON ACADEMY | PE UNIFORM



### GOLDINGTON ACADEMY BOYS PE POLO SHIRT

CHEST 26/28 CEST 30/32 CEST 34/36 CEST 38/40 CEST 42/44

Navy/Navy/White.

From £13.00

QUANTITY/SIZE REQUIRED



### GOLDINGTON ACADEMY GIRLS PE POLO SHIRT

CHEST 26/28 CEST 30/32 CEST 34/36 CEST 38/40 CEST 42/44

Navy/Navy/White.

From £13.00

QUANTITY/SIZE REQUIRED



### GOLDINGTON ACADEMY BOYS RUGBY TOP

CHEST 30/32 CEST 34/36 CEST 38/40 CEST 42/44

Twin stitched. Taped at small grandad collar and placket.

From £16.50

QUANTITY/SIZE REQUIRED



### GOLDINGTON ACADEMY GIRLS PE TOP

SIZE 9/10 SIZE XXS SIZE XS SIZE S SIZE M SIZE L  
26/28" 28/30" 30/32" 32/34" 34/36" 38/40"

Girls Fit Mid-Layer offers fantastic versatility and great all round sports performance. Navy/white. years.

From £16.99

QUANTITY/SIZE REQUIRED



### GOLDINGTON ACADEMY GIRLS SKORT

WAIST 22 WAIST 24 WAIST 26 WAIST 28 WAIST 30 WAIST 32 WAIST 34

Matches Girls Polo Shirt. Navy/Navy/White.

From £12.00

QUANTITY/SIZE REQUIRED



### GOLDINGTON ACADEMY BOYS SPORTS SHORTS

WAIST 24/26 WAIST 28/30 WAIST 32 WAIST 34 WAIST 36 WAIST 38

With longer, wider leg. Elasticated waistband and tie cord. Waist sizes are in inches. Navy/Navy/White.

From £10.00

QUANTITY/SIZE REQUIRED



### GOLDINGTON ACADEMY PE SOCKS

SIZE 1-5 SIZE 6-11  
MEDIUM LARGE

Size medium 1/5 and large 6/11 (shoe size).

From £4.99

QUANTITY/SIZE REQUIRED

## GOLDINGTON ACADEMY | ADDITIONAL ITEMS



### GIRLS BLACK SPORTS LEGGINGS

W/L 24/26 W/L 26/28 W/L 28/30 W/L 30/32 W/L 32/34 W/L 34/36 W/L 38/40

Girls sports leggings. Waist size in inches.

From **£12.00**

QUANTITY/SIZE REQUIRED



### NAME LABELS (Optional)

By using our printed iron-on labels, your child's uniform and sports kit can be identified easily and efficiently. These labels can be ironed on anywhere inside your child's garment. Maximum of 17 characters. Packs of 25 at £3.50 or 50 at £5.00.

From **£3.99**

QUANTITY/SIZE REQUIRED



### SCHOOL WATER BOTTLE (Optional)

Clear 500ml plastic drinks bottle.

From **£2.75**

QUANTITY REQUIRED



### MOUTHGUARDS (Optional)

Clear Mouthguards. Custom fit. Available in junior and senior. \*N.B Colour may vary Senior or Junior.

From **£2.99**

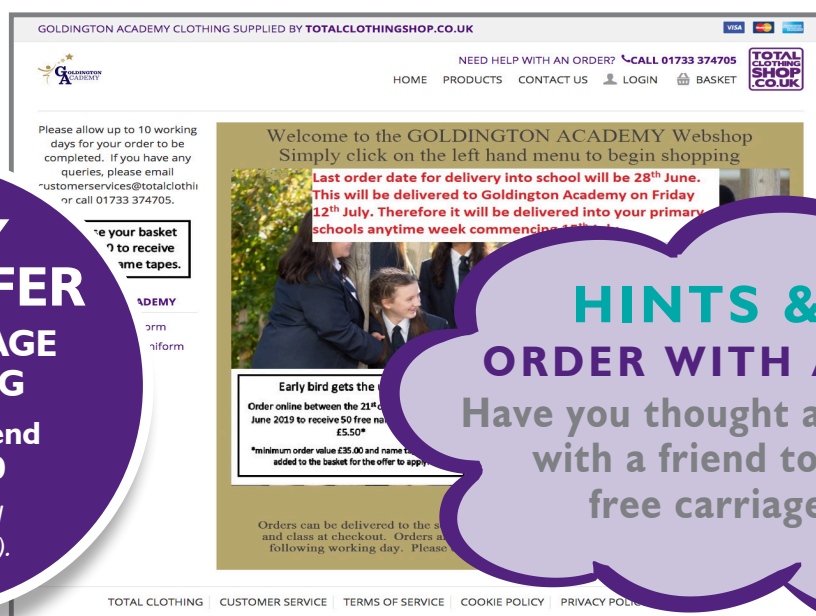
QUANTITY/SIZE REQUIRED

ORDER THE **GOLDINGTON ACADEMY** UNIFORM ONLINE AT  
[www.totalclothingshop.co.uk/goldingtonacademy](http://www.totalclothingshop.co.uk/goldingtonacademy)

**EARLY  
BIRD OFFER**  
**FREE POSTAGE  
& PACKING**

When you spend  
**over £50.00**

(From 1st until  
 30th June 2020).



### HINTS & TIPS

**ORDER WITH A FRIEND!**

Have you thought about ordering  
 with a friend to reach the  
 free carriage value?



SCHOOLS

## SHOWROOM LOCATION

### HINTS & TIPS

Please check our website [www.totalclothing.co.uk](http://www.totalclothing.co.uk) before travelling to our showroom.

Opening times may alter and we may be taking appointments only to ensure social distancing. We will update the website.

If you do have any queries, please contact our Customers Services Team who would be happy to help



No 9 Botolph Trading Estate,  
Oundle Road, Peterborough PE2 9QP  
(Turn onto Botolph Bridge next to Hilton Van Hire)

01733 394758

[customerservices@totalclothing.co.uk](mailto:customerservices@totalclothing.co.uk)



SCHOOLS

Visit [www.totalclothingshop.co.uk/goldingtonacademy](http://www.totalclothingshop.co.uk/goldingtonacademy) or visit our showroom.

# WE DO LOTS MORE THAN SCHOOL UNIFORM...



Trip or leavers  
hoodies - Sell your trip  
hoodies online  
- no hassle!



Creating professional,  
affordable personalised  
clothing. In house printing  
and embroidery.



We can supply all of  
your printed and  
embroidered clothing  
either in bulk or via  
your own online  
club shop.



Create online  
personalised  
clothing campaigns  
to raise funds.

## CREATING PROFESSIONAL, AFFORDABLE PERSONALISED CLOTHING

**TOTAL**  
C L O T H I N G

No 9 Botolph Trading Estate, Oundle Road, Peterborough PE2 9QP  
Call 01733 394758 [sales@totalclothing.co.uk](mailto:sales@totalclothing.co.uk)

[www.totalclothing.co.uk](http://www.totalclothing.co.uk)